

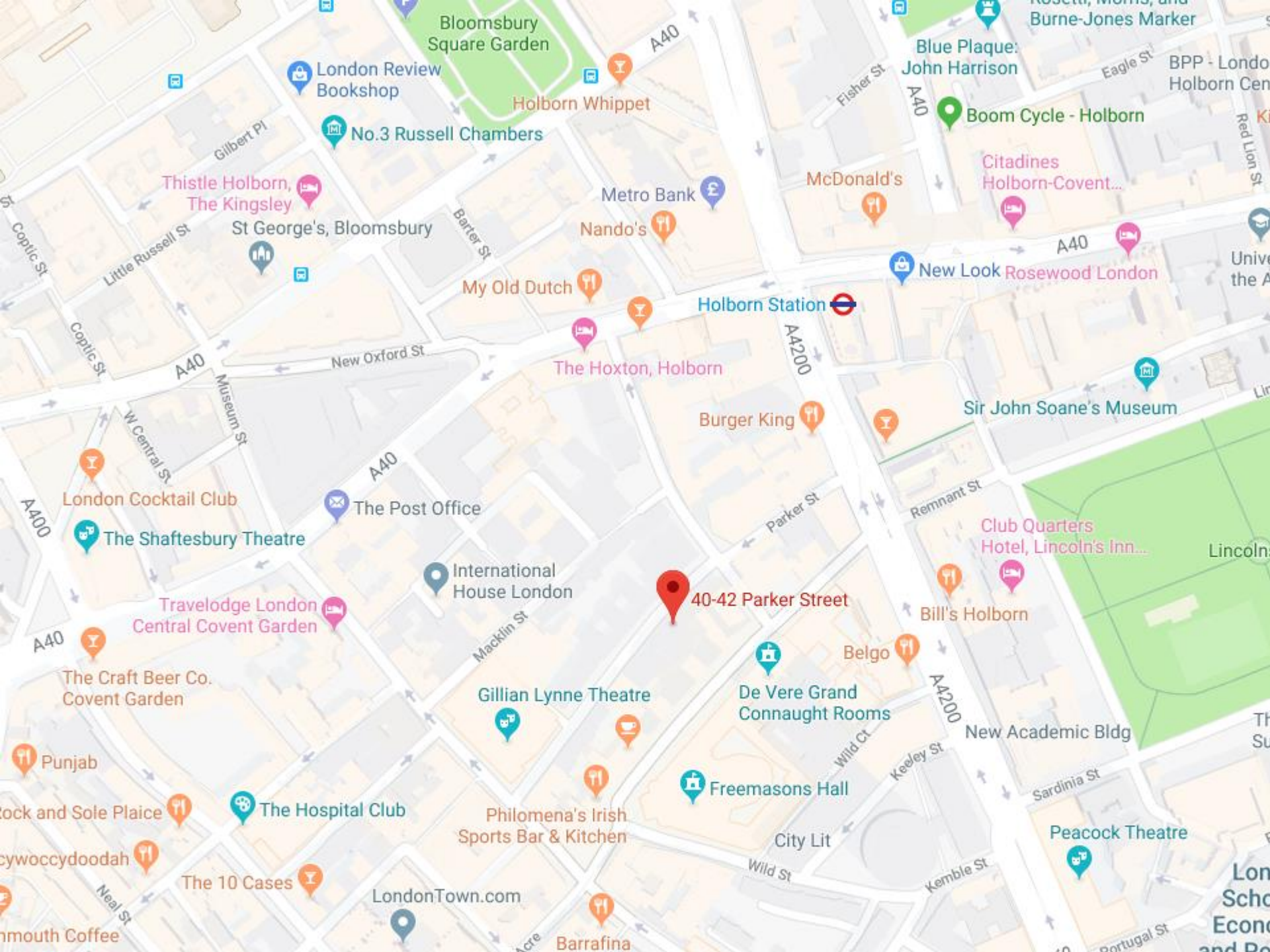
40-42 PARKER STREET
COVENT GARDEN

WC2

1,670 SQ FT - 155 SQ M

BRAND NEW TOP FLOOR OFFICE SUITE AVAILABLE

TO LET



40-42 Parker Street

Holborn Station

The Hoxton, Holborn

Sir John Soane's Museum

International House London

Club Quarters Hotel, Lincoln's Inn...

Gillian Lynne Theatre

De Vere Grand Connaught Rooms

Bill's Holborn

Peacock Theatre

Philomena's Irish Sports Bar & Kitchen

Freemasons Hall

New Academic Bldg

London Review Bookshop

Thistle Holborn, The Kingsley

St George's, Bloomsbury

Nando's

My Old Dutch

The Post Office

The Post Office

Travelodge London Central Covent Garden

The Craft Beer Co. Covent Garden

Punjab

The Hospital Club

The 10 Cases

LondonTown.com

Barrafina

McDonald's

Metro Bank

Blue Plaque: John Harrison

Boom Cycle - Holborn

Citadines Holborn-Covent...

New Look Rosewood London

London Cocktail Club

The Shaftesbury Theatre

Belgo

City Lit

Kemble St

Sardinia St

Wild Ct

Keeley St

Wild St

W Central St

Museum St

Barter St

Gilbert Pl

Fisher St

Eagle St

Coptic St

Coptic St

A400

A40

A40

A40

A4200

A4200

A40

A40

A40

Red Lion St

K...

BPP - Londo

Holborn Cen

Unive

the A

Lin

Lincoln

TH

SU

Lon

Scho

Econ

and P



Existing photo of exterior which is being redecorated





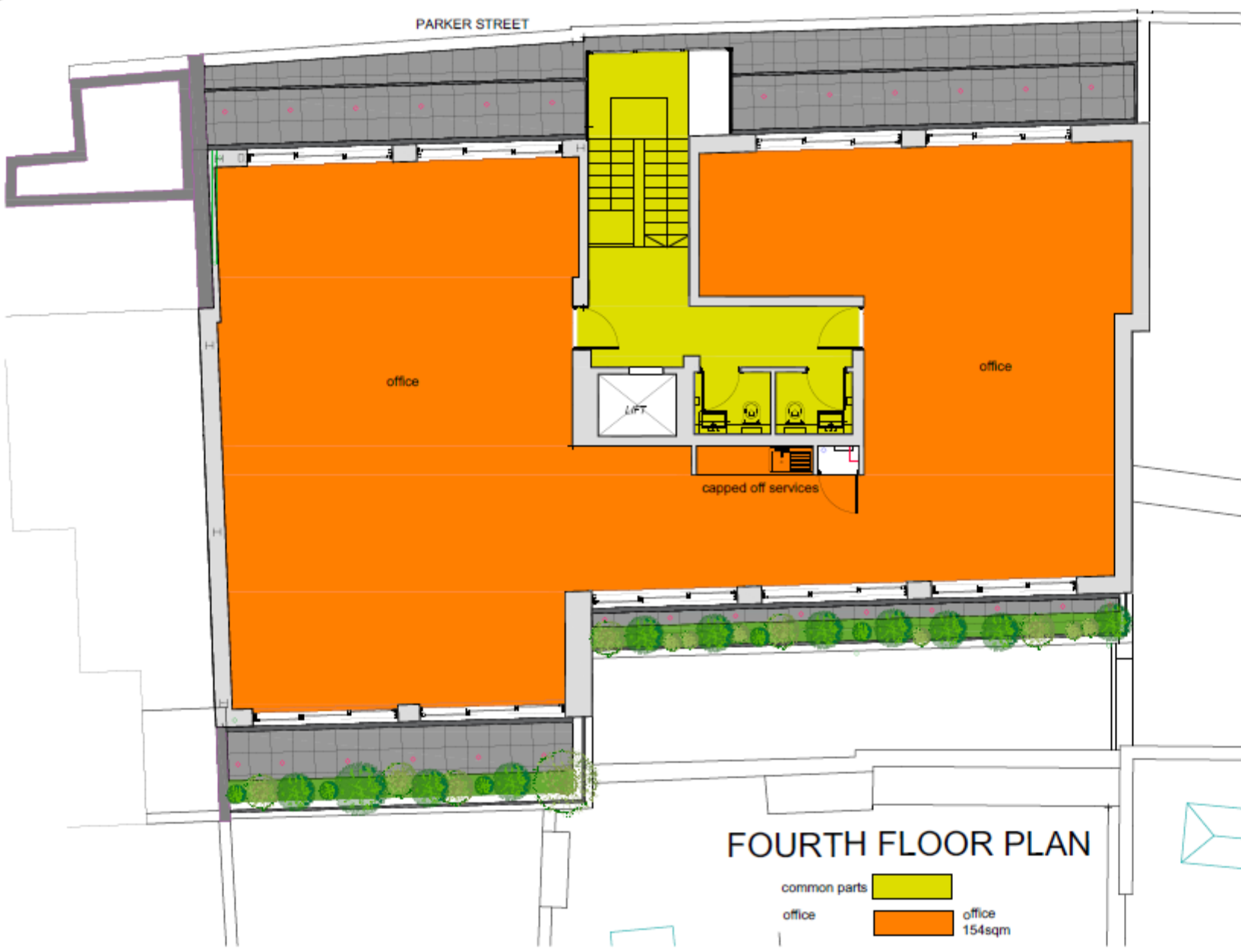








PARKER STREET



office

office

LIFT

capped off services

FOURTH FLOOR PLAN

- common parts
- office office 154sqm

GAZELLE LONDON 1000 0711 4401 2000 0711 4401 1000 0711 4401	
Client: SYDNEY WHARF LLP	
Project: 42-42 PARKER STREET, LONDON WC2B 8PD	
Drawing No: PROPOSED FOURTH FLOOR PLAN	
Issue No: 02 Date: 14.02.2018 Scale: 1:100 @ A3	Project No: 17-0228 Drawing No: 04/02 Date: -

CONTACTS



IAN BRADSHAW
MARK PHILLIPS
SEAN CUNNINGHAM
020 7009 2300

WWW.EDWARDCHARLES.CO.UK

No responsibility is taken for any error, omission or miss-statement in these particulars which do not constitute an offer or a contract

No representation or warranty is made or given during negotiations, in particulars, or elsewhere and applicants should satisfy themselves as to the accuracy of all information furnished to them