

WAVERLEY HOUSE

7-12 NOEL STREET | SOHO | W1

REFURBISHED OFFICE AVAILABLE

1,064 Sq Ft



Location

Located on the corner of Noel Street and Berwick Street the property benefits from the vibrant range of offerings of the nearby Camaby Street, Oxford Street and Regent Street.

Oxford Circus and Tottenham Court Underground Stations are both within close proximity.

Description

The space has been newly refurbished to present a light floor with open plan layout and views over Soho.

Accommodation & Outgoings

Floor	Area (sq ft)	Area (sq m)	Rent (psf)	Rates (est)	SC (psf)	Status
Part 6 th	1,064 sq ft	98.85 sq m	£59.50	c.£24.00 psf	c.£11.29	Available

Amenities/Specification

- * Comprehensively refurbished
 - * Upgraded main reception with commissionaire
 - * Underfloor trunking
 - * Air conditioning
 - * Suspended ceiling with inset lighting
 - * 2 x passenger lifts
 - * Fibre
 - * WC's
 - * Showers and bike racks
-

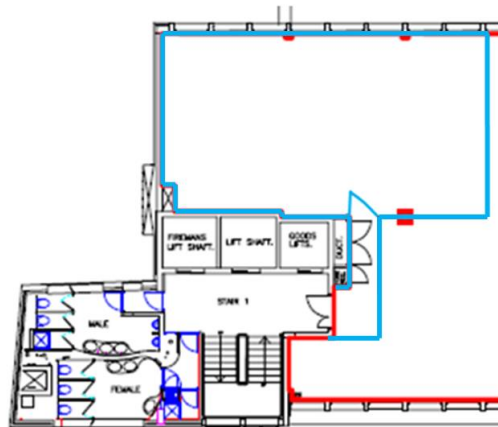
Lease

Sub lease of the existing lease for a term by arrangement.

EPC Rating

A

Floor Plan



Viewings

Strictly by appointment through sole letting agents:

Edward Charles & Partners

Andrew Okin

aokin@edwardcharles.co.uk

020 7009 2300

07887 714491

Katie Dart

kdart@edwardcharles.co.uk

020 7009 2321

07769 310206

www.edwardcharles.co.uk